

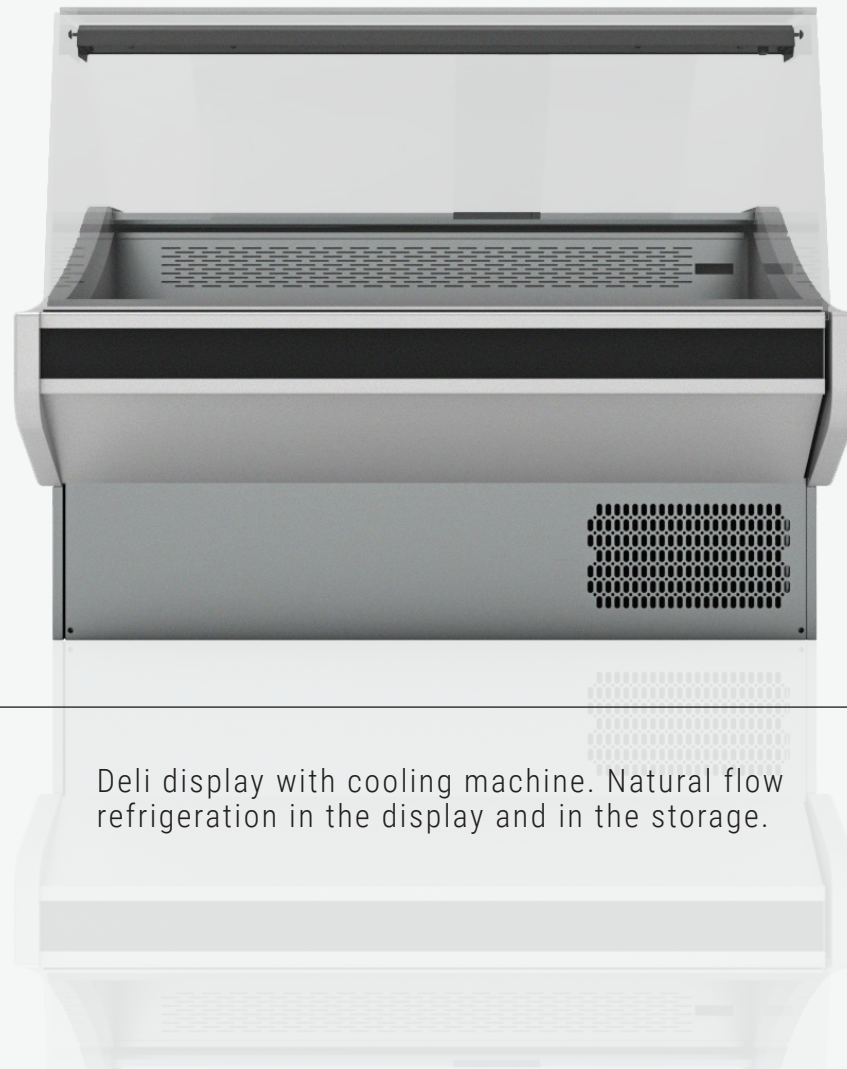


HERMES
Deli display



HERMES 1510 + 1510mm


Modern and timeless combination.




Deli display with cooling machine. Natural flow refrigeration in the display and in the storage.

L 1050,1510, 2010 (mm)
W 870 (mm)
H 1290 (mm)



 Cold cut
+1 / +6°C





 Cheese
+1 / +6°C

 Meat
+1 / +2°C

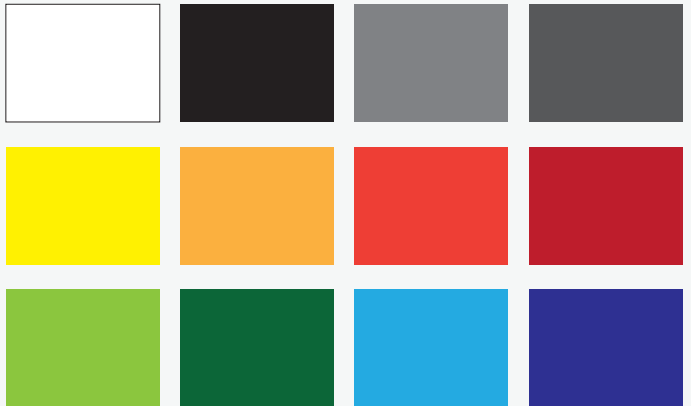
Specifications

- Eco-friendly polyurithane insulated panels
- Automatic defrost system
- Detachable operators Plexiglass
- Straight detachable crystal glasses
- Storage door opening 440x290mm
- Working back counter of 280mm
- Usable width of display: 540mm

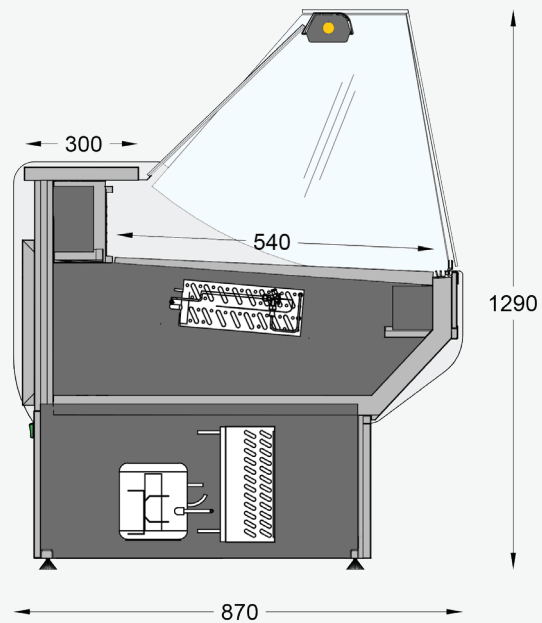


-  Colour selection
-  LED lighting
-  Electronic thermometer thermostat
-  Customizable branding

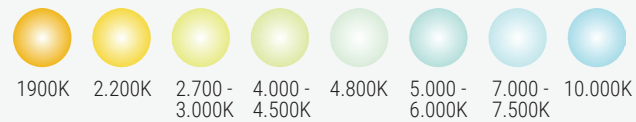
Colour swatches



We provide a wide range of RAL colours, melamine coatings and AGT with glossy, matte, smooth or grainy surface that can meet the most difficult requirements in relevance always with the needs and aesthetics of the commercial space.



LED lighting swatches



We also offer a wide range of LED lighting colours that can provide usability or mood in the showcase and aesthetics of the final result while being easy to replace, provides economy due to low power consumption, and is environmentally and human friendly because it does not contain dangerous substances such as mercury.