

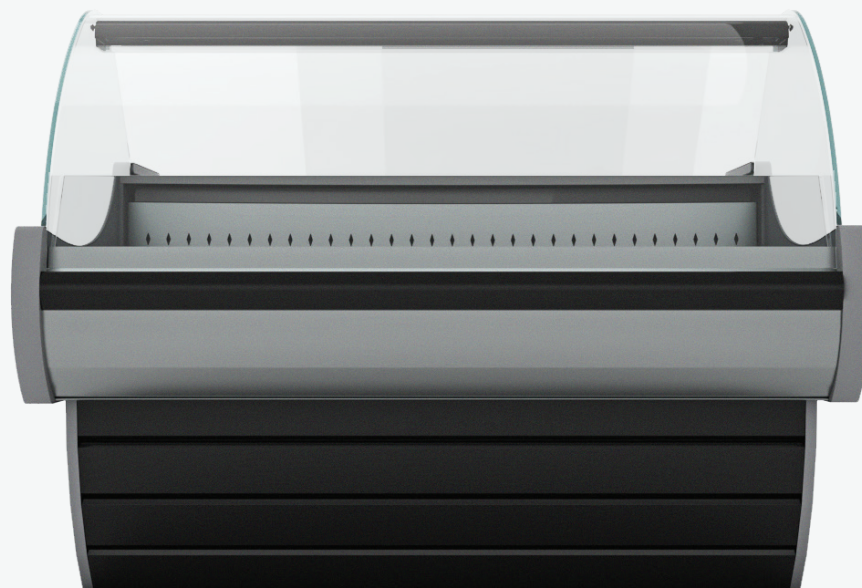


P O S E I D O N
Deli display

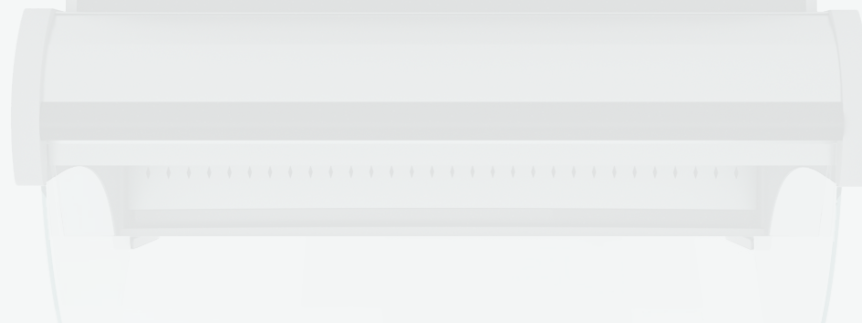


POSEIDON 2020 + 2020mm

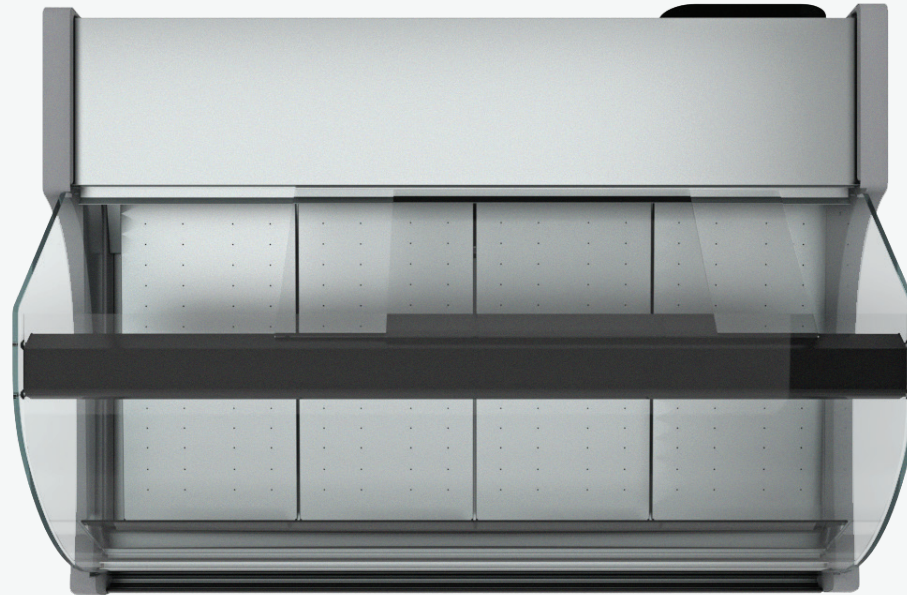
Timeless and sophisticated.





Deli display with installed or not cooling machine.



L 1520, 2020, 2520
3020, 3520, 4020 (mm)
W 1090 (mm)
H 1170 (mm)



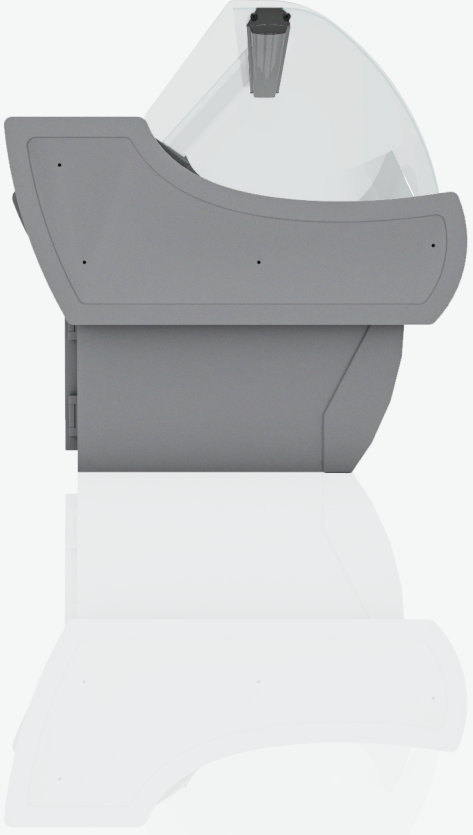
 Cold cut
+1 / +6°C





 Cheese
+1 / +6°C

 Meat
+1 / +2°C

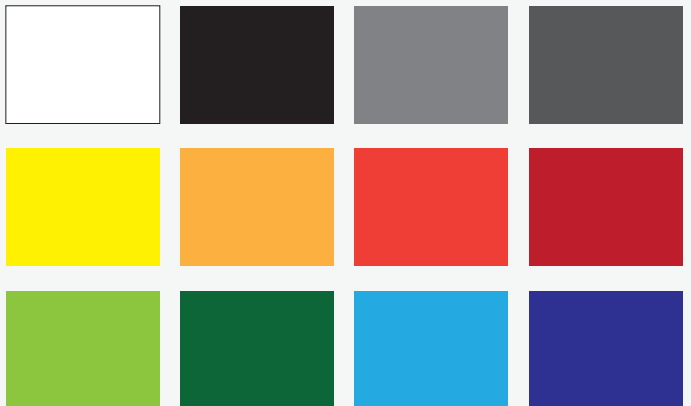
Specifications

- Eco-friendly polyurithane insulated panels
- Water evaporator
- Ventilated refrigeration
- Detachable operators plexi glass and filing case
- Installed or not cooling machine
- Curved detachable crystals
- Automatic defrost system
- Usable width of display: 680mm
- Cooling storage of natural flow with a door opening of 510x380mm
- Working back counter of 300mm

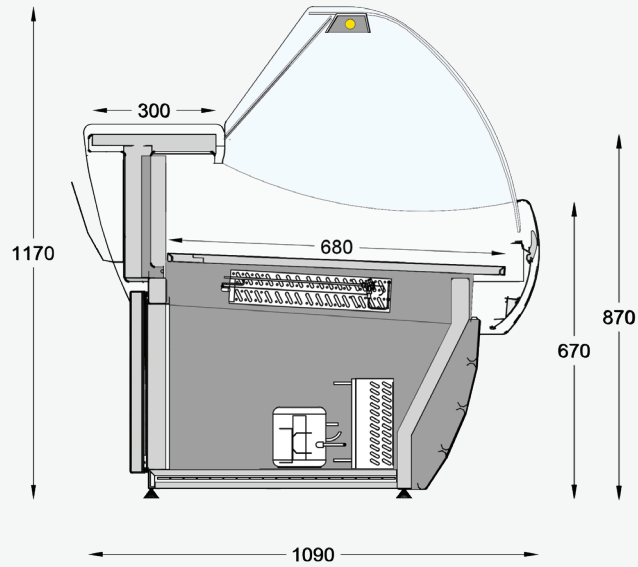


-  Colour selection
-  LED lighting
-  Electronic thermometer thermostat
-  Customizable branding

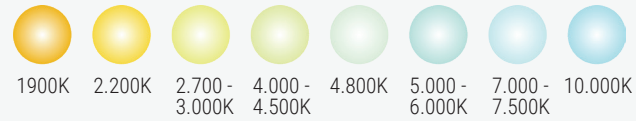
Colour swatches



We provide a wide range of RAL colours, melamine coatings and AGT with glossy, matte, smooth or grainy surface that can meet the most difficult requirements in relevance always with the needs and aesthetics of the commercial space.



LED lighting swatches



We also offer a wide range of LED lighting colours that can provide usability or mood in the showcase and aesthetics of the final result while being easy to replace, provides economy due to low power consumption, and is environmentally and human friendly because it does not contain dangerous substances such as mercury.